



Growing Green!

As our garden here at KPFB is starting to grow greens, we are reminded about how important it is for us to care for the peninsula by recycling, going digital, and utilizing past best date foods for our farms and mulchers.

We at KPFB have been dedicated to zero waste for a long time, and now we want to grow as a food bank and go even more green by decreasing our paper use. Join us at KPFB as we "grow" green! This spring, sign up for email correspondence, find information online instead of through paper brochures, and give digitally! Sign up for digital only communication by emailing us at info@kpfoodbank.org, and check out our website at kpfoodbank.org where you can find information about our programs, volunteering, and donating!

Thank you for taking this step with us, and for all your support!

Growing Green

Scan the QR Code or click the button below to give online today!



2

YOUR GIFTS TO OUR NEIGHBORS ARE AMAZING!

With the food and fuel prices rising, and the need for food more pressing than in months past, your help has become more important than ever! So far this year, you have contributed to helping thousands of people across the peninsula. In fact, on April 12th, your support helped us and the Anchor Point Food Pantry feed over 180 people in just one day!

"I am not alone in the struggle to make ends meet the food bank provides for so many people in our community. Never thought I would be in this position in my lifetime. But I am widowed and recently retired, my SS only goes so far. I am so grateful for the weekly support of the food bank to help keep my head above water. Thank you!" ~ Your Neighbor In Anchor Point



WHAT IS NEIGHBOR DAY?

May 4th was Neighbor Day and we celebrated by encouraging people to do good for our neighbors.

Neighbors are the people who come to us for help. Hunger doesn't just affect the people hundreds of miles away, it affects the people next door, our family and friends, our neighbors.

WHO ARE MY NEIGHBORS?

Thank you!

Thank you to everyone who joined us in lending our neighbors a helping hand by donating, volunteering, and spreading awareness!

KPFB IN THE COMMUNITY

KPFB at Walmart & Wednesday Market

Thank you for your support of KPFB at Walmart and the Soldotna Creek Park as we sold raffle tickets, educated people about hunger on the Kenai Peninsula, and more!



FISHING FOR SUPPORT

THANKS FOR JOINING THE CREW! Partnering to build a better Anchor Point!

Thank you to everyone who donated to APFP's **Fishing for Support** fundraiser and dinner on April 27th! About \$20,000 was donated to help APFP put up a permanent building to help those in need in Anchor Point!

Spring

Thank you to all our vendors and sponsors!

FESTIVAL

Thank you to all who joined us at KPFB for our annual Spring Festival! There was delicious food, interactive booths with our partner agencies, and summer-themed prizes.



EVENT REMINDER



BOYS & GIRLS CLUBS
OF THE KENAI PENINSULA

KENAI PENINSULA
Food Bank

FREE

OILERS NIGHT

**FREE ADMISSION FREE HOT DOGS
FREE KIDS ACTIVITIES**

THE PENINSULA OILERS, KENAI PENINSULA
FOOD BANK, AND BOYS & GIRLS CLUB OF
THE KENAI PENINSULA HAVE PARTNERED FOR
A FREE OILERS BASEBALL GAME!

JULY 12, 6 PM CORAL SEYMOUR PARK

LEARN MORE AT: KPFoodBank.org/King-of-the-River

King of the River

KENAI & SOLDOTNA WILL COMPETE TO SEE
WHICH CITY CAN RAISE THE MOST FOOD
AND FUNDS FOR THE KENAI PENINSULA
FOOD BANK. ALL DONORS ARE ENTERED TO
WIN \$1,000, DRAWN AT THE OILERS GAME!

**WINNING
CITY'S
MAYOR
THROWS
FIRST PITCH
AT THE
OILERS GAME!**



DROP-OFF LOCATIONS:

KENAI PENINSULA FOOD BANK
KENAI CHAMBER OF COMMERCE
SOLDOTNA CHAMBER OF COMMERCE

SOUP



SUPPER

Join us for our 29th annual Soup Supper
Dinner and Auction Fundraiser to help raise
funds for feeding our neighbors in need!

SATURDAY, AUGUST 24TH
SOLDOTNA SPORTS COMPLEX
DOORS OPEN AT 5:00 PM

**BUY YOUR
TICKET
TODAY AT THE
FOOD BANK
OR ANY OF
OUR EVENTS!**

\$50

per ticket

Each ticket comes with
a hand crafted bowl,
delicious soup dinner,
and access to our live
and silent auctions.

4

Thank You!

EVENT SPONSORS!

Join our wonderful donors in supporting the food bank through sponsorships for our annual fundraisers! We have three sponsorship opportunities this year:

- Join CPH, KPCCC, Mike Bateman, CIRI, PCHS, GLM Energy Services Inc., Alaska Community Foundation, Johnson Insurance Group, ConocoPhillips Alaska, Albertsons / Safeway of Soldotna, Stewart Title, Wells Fargo, Marathon, 907 Legal, Salamatof Native Corporation, Arby's Foundation, Eyewear Express, Northrim Bank, and Petro 49, Inc dba Alaska Oil Sales in supporting our Soup Supper this August 24th.
- Join CPH in sponsoring the It's Scary to be Hungry event on October 31st.

Mike Bateman

1. DIAMOND

KPCCC

central peninsula hospital



2. PLATINUM



ConocoPhillips Alaska



PCHS



3. GOLD

SAFEWAY



WELLS FARGO

4. SILVER



Foundation



Northrim Bank



The Alaska Community Foundation

EYEWEAR EXPRESS

The Missing Piece to the Insurance Puzzle.

Johnson Insurance Group



5. BRONZE

stewart
title of the kenai peninsula

Annual Raffle Tickets for Sale!

Here is your chance to win an incredible prize as well as help support KPFB! If you would like to purchase a ticket or get more information please call 907-416-7619 or stop by the food bank!

Win 2 Round Trip Tickets, anywhere Alaska Airlines fly's



Drawing on Saturday, August 24th, 2024, at KPFB's Soup Supper Event. Do not have to be present to win.

\$100 per Raffle Ticket
Only 100 Tickets being sold!

AT SAFEWAY OF SOLDOTNA'S GRAND RE-OPENING, THEY DONATED \$2,000



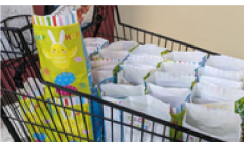
OUR LADY OF PERPETUAL HELP CATHOLIC CHURCH DONATED 482 POUNDS OF FOOD FROM THE SOUPER BOWL OF CARING FOOD DRIVE



A COMMUNITY MEMBER DONATED BIRTHDAY BAGS



COLLEGE HEIGHTS BAPTIST CHURCH DONATE EASTER BAGS FOR KIDS



GLESSING FAMILY FARM DONATED 250 POUNDS OF POTATOS



OUR LOCAL GIRL SCOUT TROOP DONATED BIRTHDAY BAGS



A FAMILY IN OUR COMMUNITY DONATED OVER 100 POUNDS OF FOOD



THANK YOU

Thank you to all our wonderful volunteers, staff, board members, donors, and sponsors!

GRAND VALLEY CAMPUS MINISTRY VOLUNTEERS FROM MICHIGAN HELPED KPFB DURING SPRING BREAK



KENAI LIONS CLUB MEMBERS DONATED GENEROUSLY TO KPFB



WISDOM TREE VOLUNTEERS HELPED KPFB IN OUR WAREHOUSE AND DINER



COLLEEN VOLUNTEERED AS KPFB'S COOK FOR A WEEK AND MADE SOME GREAT MEALS



DIAMOND DANCE PROJECT AND ATTENDEES OF THEIR EVENT GAVE FOOD AND FUNDS DURING THE ALOHA VIBES EVENT, WHICH RAISED 289 LBS OF FOOD AND \$251



THE STUDY VOLUNTEER GROUPS HELPED KPFB SEVERAL TIMES IN OUR WAREHOUSE AND DINER



EMPLOYEES AT ANYTIME FITNESS HOSTED A FOOD DRIVE BENEFITTING KPFB

THE CHEER SQUAD AT RIVER CITY CHEER AND GYMNASICS DONATED BIRTHDAY BAGS



IDEA HOMESCHOOL STUDENTS PUT TOGETHER INSTANT SOUP MIXES FOR OUR NEIGHBORS

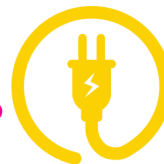
CAD-RE FEED DONATED ASSORTED VEGETABLE SEEDS FOR THE GARDEN



DIBBLE CREEK ROCK DONATED SMALL CRUSHED ROCK FOR OUR NEW HIGH TUNNEL



A SKYVIEW MIDDLE SCHOOL GROUP VOLUNTEERED AT KPFB



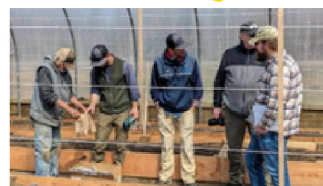
LARRY OPPERMAN DONATED 5000 KWH



KENAI POST OFFICE DONATED 80 LBS OF FOOD FROM THEIR FOOD DRIVE



SOLDOTNA POST OFFICE DONATED 150 LBS OF FOOD FROM THEIR FOOD DRIVE



NRCS AND KENAI ROTARY CLUB PROVIDED US WITH A NEW IRRIGATION SYSTEM AND STAFF TRAINING

PAUL SCOSKIE WITH MARC ROTOTILLED OUR GARDEN



PRAYING PELICAN GROUPS VOLUNTEERED IN EVERY AREA OF KPFB, AND HELPED US GET READY FOR THE SUMMER





LEAVE A LEGACY *Of Compassion*



Your dedication to feeding our neighbors suffering from hunger has been reflected by your generous donations, volunteer work, and advocacy. Keep that light of compassion burning bright with a Legacy Gift and Planned Giving. Your investment in food programs and advocacy will yield benefits for decades to come. The food bank simply could not exist without donors like you!

Give from your Retirement

You can donate assets directly from an IRA to KPFB (qualified charitable distribution or QDC) if you're 70½ or older. A QCD generally does not increase your gross income and can satisfy your required minimum distribution, lowering your tax bill. QCDs can be made electronically or by check payable to KPFB.

Give from your Stocks

Giving long-term, appreciated securities has a dual tax benefit. When you give stocks, you receive a higher income tax deduction and the food bank receives more funds. To give from your stocks, contact your broker.

Testamentary Giving

Giving to KPFB at the time of your passing allows you to maintain control of the assets during your life and can reduce your heirs' estate tax liability. There are many ways to give:

- Talk to your lawyer about adding KPFB to your will.
- Add KPFB as a beneficiary on your retirement accounts, life insurance policies, or annuity contracts.
- Talk to your bank about adding a TOD or POD to your brokerage or bank account.

Endowment Giving

You can give directly to KPFB's Endowment and ensure your gift adds to the longevity of KPFB! There are several ways to give:

- Send in a check payable to "The Alaska Community Foundation" with "Kenai Peninsula Food Bank Fund" in the memo line or in an accompanying document.
- Donate online at alaskacf.org/funds/kenai-peninsula-food-bank-endowment-fund/

FOR MORE INFORMATION, CONTACT THE SOLDOTNA EDWARD JONES AT (907) 260-2670.



Please consider giving to the organization(s) that you feel compelled to support. Pick Click Give approved organizations all strive to make our communities better places for everyone to live. All donations are tax deductible and donors will receive tax documentation from the State once the donation has been processed. Permanent Fund Dividend applications are available until March 31, though Alaskans can choose to add or adjust their pledges online until August 31. File for your PDF or add a pledge at pfd.alaska.gov



33955 Community College Drive
Soldotna, AK 99669
907-416-7619; Fax: 907-416-7623

Have you considered?

Email communication helps to reduce postage costs, and can be fiscally and environmentally responsible. We try to communicate with donors through email as much as possible. If you aren't receiving emails from us, but would like to, please contact lmurray@kpfoodbank.org

**THIS INSTITUTION IS AN
EQUAL OPPORTUNITY
PROVIDER.**

**Visit our website
and social
media pages!**

Twitter:

@KPFoodBank

Instagram:

@kenaipenisulafoodbank

Facebook:

facebook.com/kpfoodbank

Website:

kpfoodbank.org

