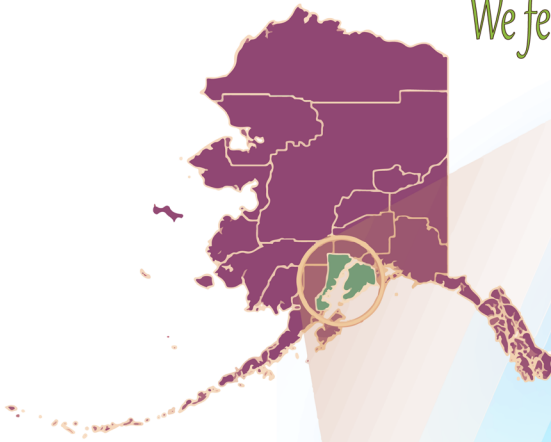


SERVING THE ENTIRE KENAI PENINSULA ONE PERSON AT A TIME

We feed people because nobody deserves to be hungry



ANNUAL REPORT 2023

Kenai Peninsula Food Bank



Email: info@kpfoodbank.org

Phone: (907) 416-7619

Website: www.kpfoodbank.org

Address: 33955 Community College Dr.

Soldotna, AK 99669

MESSAGE FROM OUR EXECUTIVE DIRECTOR

Dear Supporters and Friends,

We are excited to present our 2023 annual report to you! This was an eventful year for the Kenai Peninsula Food Bank. 2023 was rife with new challenges for our communities and the food bank, with the continued SNAP backlog affecting thousands of Alaskans every day, the rising fuel and food prices, and so much more. Even the government commodities that fill our senior and family food boxes decreased by 74% by the end of the year, due to shortages at the federal level. At the height of the difficulties, we saw an increase of 33% in our TEFAP and Direct Service programs, 73% in our seniors' program, 54% in our Fireweed Diner, and 115% in our emergency firewood program. We even had to rearrange our warehouse and Fireweed diner to accommodate the increases. As supplies became scarce, more and more seniors, individuals, families, and children were seeking food assistance from KPFB. We were bridging the gaps and serving more with less!

Despite all these hurdles, supporters like you shined bright, donating more food and funds than ever before. Throughout 2023, your support went towards expanding our reach and increasing the assistance we provide to communities such as Hope, Nanwalek, Tyonek, Seward, the list goes on! The hundreds of volunteers donated more than 6,500 hours over the year, helping in food distribution, operations, remodeling, and events. Sponsors, donors, partner agencies, vendors, and the State of Alaska poured out support to help us cover the costs of expanding our services so that even in this crisis we were able to keep our neighbors fed. Thank you so much to all our volunteers, food drive hosts, vendors, donors, the State of Alaska, and sponsors! We couldn't have made it through the year without you!

Greg Meyer, Executive Director



EXPANDING OUR ORGANIZATION

Our Mission

We feed people because nobody deserves to be hungry.

Our Vision

The Kenai Peninsula Food Bank will provide nourishing food to those who require assistance and will promote public awareness of hunger issues.

Our Values

- ❖ The mission of the Kenai Peninsula Food Bank is to provide needy children and adults with the nutritional food they need to be healthy and well-nourished citizens that contribute to the vitality of the communities in which they live.
- ❖ There are two primary functions of a Food Bank: 1) provide food security and community connection to our neighbors in need and 2) distributing food to non-profit agencies that serve hungry people.

“If you can’t feed a hundred people, then just feed one.” - Mother Teresa

History

The Kenai Peninsula Food Bank (KPFB) has been a staple of the over 40 communities on the Kenai Peninsula of Alaska since 1988. We are a non-profit organization that provides food to over 45 non-profit agencies for their food programs. We distribute USDA Commodities, provide emergency food programs, collect and redistribute food, perform food reclamation, serve meals, hold community events, and so much more.

Board of Directors

Sean O’Reilly	Steve Manley	Elizabeth Leduc	Mike Haggerty
Linda Tannehill	Corbi Rhoades	Claire Calhoun	Bette Seaman
Marti Pepper	Summer Lazenby	Rhoda Dolifka	Craig Walls

EXPANDING OUR REACH IN COMMUNITIES

Hunger on the Kenai Peninsula

In 2023, the Kenai Peninsula Borough saw a substantial increase in food insecurity.

Food Insecurity

- 1 in 9 people suffer from food insecurity
- 1 in 8 children suffer from food insecurity

Government Commodities

- Government commodities dropped by 74% in 2023

SNAP Backlog

- Tens of thousands of Alaskans found themselves depending solely on food banks as they waited months for their SNAP benefits

Area Served

Hunger touches every area of the Kenai Peninsula—25,600 square miles, over 40 communities, and a population of 60,898 people. With such a large area to serve, KPFB uses trucks, contracts with pilots, and more to reach areas of need. KPFB also partners with over 45 other non-profit organizations across the peninsula.



Partner Agencies

Abundant Life Assembly of God	Alaska Christian College	Amundsen Educational Center	Anchor of Hope Church
Anchor Point Food Pantry	Anchor Point Senior Citizens, Inc.	Arctic Barnabas Ministries	Boys&Girls Club of the Kenai Peninsula
Central Peninsula Hospital Serenity House	Child Evangelism Fellowship	CIHA - Ninilchik	Desert Streams Ministry
Freedom House	Frontier Community Services	He Will Provide, Inc. (Seward)	Homer Community Food Pantry
Kalifonsky Christian Center	Kasilof Community Church	Kenai Peninsula Borough School District	Kenai Senior Center
Kenai United Methodist Church	Kenaitze Indian Tribe	Ministry of the Living Stones	Missionary Aviation Repair Center
Moose Pass Community Church	Mt. Redoubt Baptist Church	New Hope Counseling Center	Nikiski Church of the Nazarene
Nikiski Senior Citizens, Inc.	Nikiski Shelter of Hope	Ninilchik Senior Citizens, Inc	Ninilchik Youth Horse Camp
North Star United Methodist Church	Peninsula Grace Brethren Church	Rivers of Life Assembly of God, Inc.	Salvation Army - Homer
Salvation Army - Kenai	Soldotna Area Senior Citizens	Soldotna Church of God	Soldotna Montessori Food Pantry
Soldotna Pentecostals Inc.	Soldotna United Methodist Church	Sterling Area Senior Citizens, Inc	The LeeShore Center
The Saturday Lunch Program	Trinity Christian Center	Tyonek - Indian Creek Health Dept	

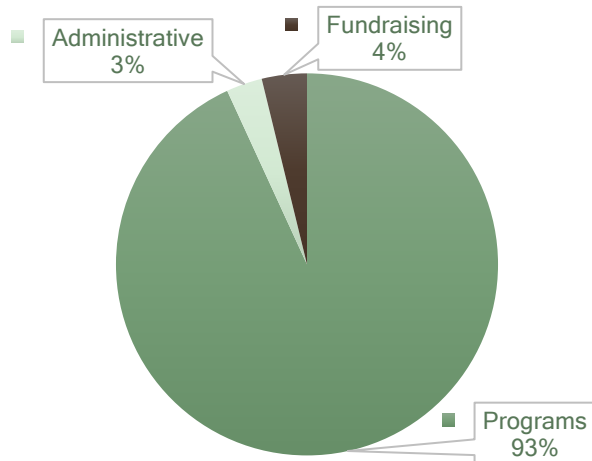
EXPANDING OUR FISCAL RESPONSIBILITY

Our Financial Position

We are dedicated to fiscal responsibility and ensuring that the majority of our funding is put towards our programs. At KPFB, feeding people is always our priority.

KPFB receives funding from several major sources: donors, grants, fundraisers, and more.

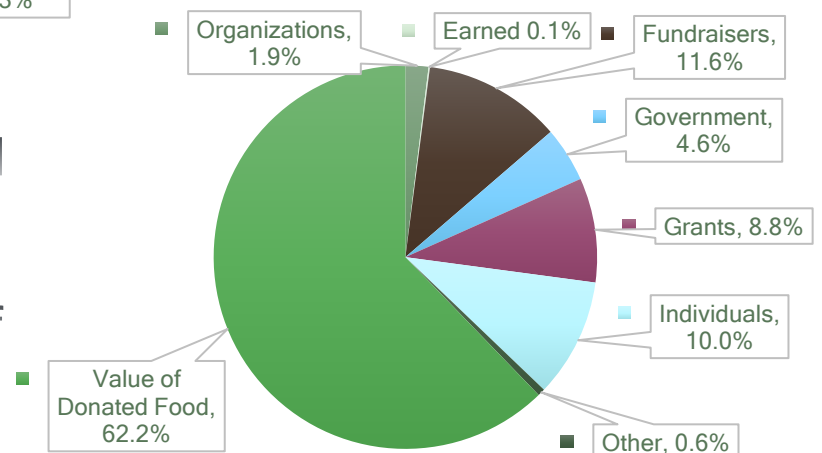
Expenses Percentage



Donated food, fundraisers, grants, and individual donations make up the majority of our funding.

93% of our funding goes towards our programs.

Revenue Percentage



Volunteers

Our over 200 volunteers are just as dedicated to feeding the hungry as the KPFB staff is! Over 6,500 hours were spent helping in food distribution, operations, remodeling, and events by this incredible group. KPFB's strong volunteer community enable us to have only 12 staff members, despite serving the entire Kenai Peninsula.



2023 Major Donors

- ❖ American Heart Association, Inc.
- ❖ Becht Industrial Group
- ❖ Laura Best
- ❖ Roger & Leslie Boyd
- ❖ Boys & Girls Club of the Kenai Peninsula
- ❖ CalTex Energy Group, LLC
- ❖ Central Peninsula Hospital
- ❖ Ben Cheah
- ❖ Christ Lutheran Church
- ❖ Cokebusters USA
- ❖ ConocoPhillips Alaska, Inc
- ❖ Cook Inlet Region Inc.
- ❖ Terri Davis
- ❖ Ehrhardt, Elsner & Cooley
- ❖ Excel Scaffold
- ❖ Food Bank of Alaska
- ❖ FRCH Rentals
- ❖ GLM Energy Services, LLC
- ❖ Global Credit Union Foundation
- ❖ Mike Haggerty
- ❖ Robert & Pamela Hansen
- ❖ Joel & Laura Henkelman
- ❖ Irene Houdek
- ❖ HPC Industrial
- ❖ IRISNDT
- ❖ Kenai Peninsula Borough
- ❖ Kenai Peninsula Community Care Center
- ❖ Thomas Kleeman
- ❖ Koch Engineered Solutions KES
- ❖ Christopher & Erika Leuci
- ❖ Marathon Petroleum Company, LP
- ❖ Midas Soldotna
- ❖ Mike Navarre
- ❖ Peninsula Community Health Services
- ❖ Petro 49, Inc dba Petro Marine Services/Alaska Oil Sales
- ❖ Rasmuson Foundation
- ❖ Seldovia Shellfishing Co.
- ❖ State of Alaska
- ❖ USDA
- ❖ Dennis & Ginger Steffy
- ❖ Stronghold Limited
- ❖ Andrew & Laura Tallman
- ❖ The Alaska Community Foundation
- ❖ The Carr Foundation
- ❖ United Way of Anchorage
- ❖ USA DeBusk
- ❖ Jessica Veldstra
- ❖ Wells Fargo Kenai
- ❖ West Coast Welding & Piping Inc
- ❖ Roy Williams
- ❖ Anthony Zilk



EXPANDING QUALITY FOOD SOURCES

Types of Sources

KPFB receives food from a variety of different types of food sources.

Food Drives

Last year, members of the community, organizations, and businesses held over 50 food drives.

U.S. Department of Agriculture (USDA)

KPFB receives The Emergency Food Assistance Program (TEFAP) and Commodity Supplemental Food Program (CSFP) commodities from the USDA.

Farm Fresh Foods

Local farmers often donate excess perishable goods to KPFB.

Salvaged and Donated Food

When stores have a surplus of foods, such as produce, they donate those items to the food bank (Salvaged food). Community members, businesses, stores, and organizations also donate perishable and non-perishable foods (Donated food).

Vendors

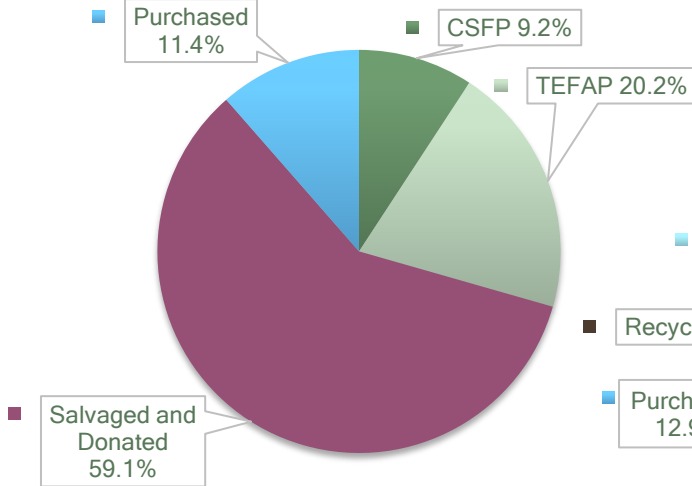
Stores and businesses either donate food or offer KPFB discounted prices for bulk food purchases.



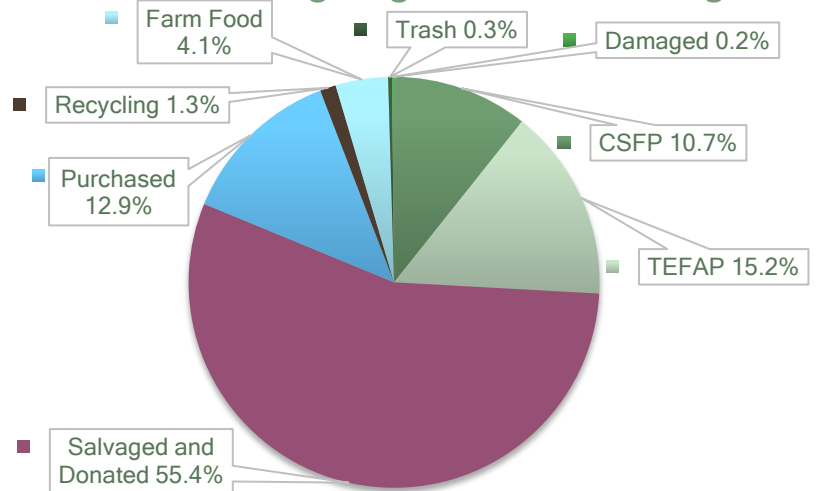
EXPANDING OUR QUALITY PROGRAMS

Incoming and Outgoing Foods

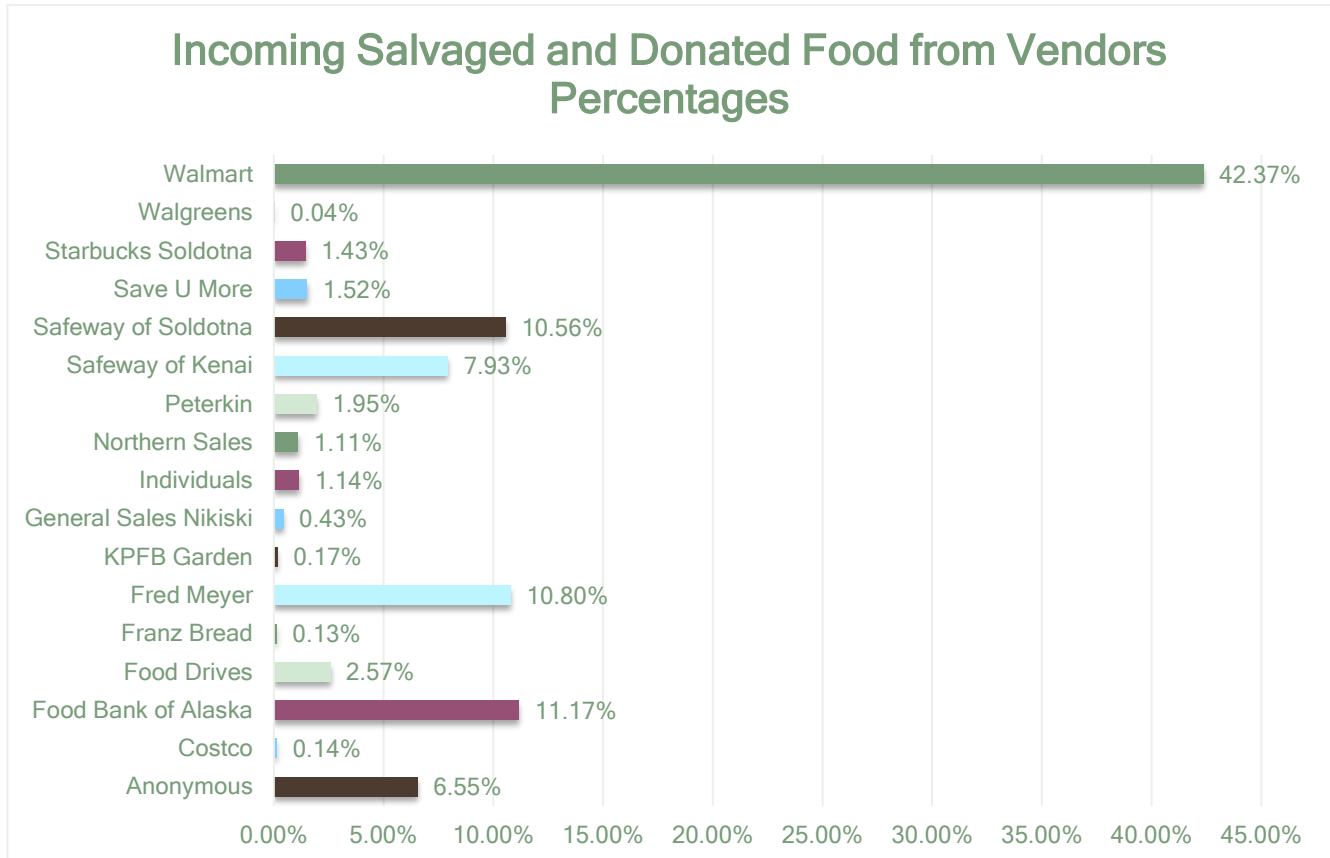
Total Incoming Food Percentages



Total Outgoing Food Percentages



Incoming Salvaged and Donated Food from Vendors Percentages



Programs



TEFAP

- 20,675 people were served using TEFAP on-site at KPFB
- 1029 people were served using KPFB food at the Salvation Army in Homer
- 325 people were served using KPFB food at the Salvation Army in Kenai



CSFP

- 4413 food boxes were given to seniors in the CSFP program
- 145 food boxes were given to seniors in the WLFS program



Cache

- Over 20,000 people were served in our Cache
- 65 households received 122 loads of firewood at no cost through our emergency firewood program



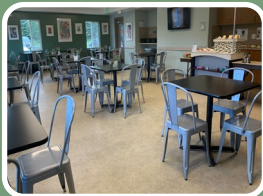
Remote Distribution

- 1802 people were served in our remote distribution program in Anchor Point
- Turkeys were provided by KPFB to partner agencies during the holidays at significantly reduced costs



Partner Agencies

- Thousands of meals were served at the Nikiski Shelter of Hope using the food provided by KPFB at no cost to the shelter
- KPFB distributed food on a daily basis to partner agencies throughout the Kenai Peninsula

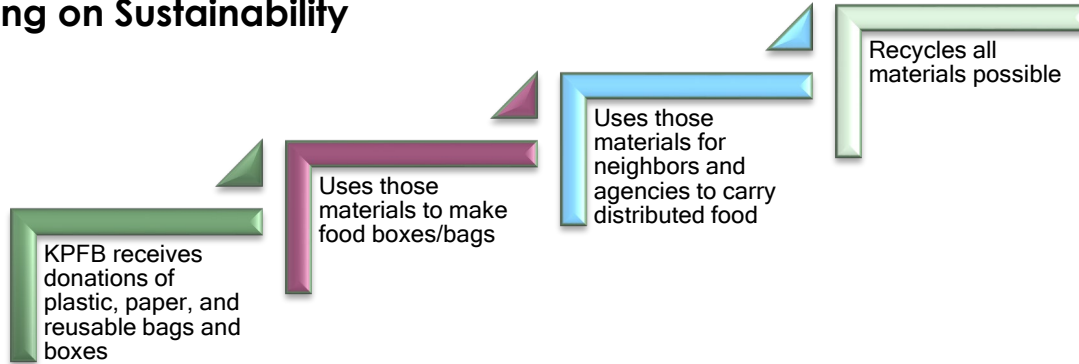


Fireweed Diner

- A total of 22,054 meals were served in our Fireweed Diner and the Anchor Point Food Pantry
- Meals for Project Homeless Connect and other outreach programs were also prepared in the Diner

EXPANDING FOR THE FUTURE

Focusing on Sustainability



Focusing on Reduction of Waste

Freeze Drying

KPFB is now freeze-drying perishable foods that would have otherwise gone to farm food every day to preserve even more food for our neighbors to enjoy.

Salvaged Food

KPFB sends trucks to local stores, distributors, and bakeries to salvage foods.

Office Supplies

Used supplies, including electronics and batteries, are recycled or composted.

Food for Farms, Composters, and More

Whenever perishable food enters KPFB, staff and volunteers sort the foods into consumable, farm foods, compost, and freeze dry. Farmers and composters then pick up the products from KPFB for use on their farms or composting land, while our freeze-drying team preps food for the process. Mushers also frequent the food bank for feed for their teams.

Looking Ahead

