

KENAI PENINSULA

# Food Bank

NOVEMBER 2023  
END OF THE YEAR  
NEWSLETTER

Food for Thought



*Happy Holiday Season, from  
the KPFB family to yours!*

## LOOKING BACK AND MOVING FORWARD

As 2023 comes to a close, we look back on everything that's happened throughout the year as we prepare to step into 2024. This year has been full of new challenges, with the continued SNAP backlog still affecting thousands of Alaskans everyday, the rising fuel and food prices, the 74% decrease in government commodities, and more. At the height of the difficulties, we saw an increase of 33% in our TEFAP and Direct Service programs, 73% in our seniors' program, 54% in our Fireweed Diner, and 115% in our emergency firewood program. We even had to rearrange our warehouse and Fireweed diner to accommodate the increases.

As the needs across the peninsula keep growing, your support means more to us than ever! Over the past year, your donations have gone towards feedings thousands of families and individuals suffering from food insecurity across the Kenai Peninsula, providing aid to our more than 45 partner agencies, assisting the local economy and businesses, and supporting local farmers. With the needs and difficulties persisting, we have a long way to go to ensure that nobody goes hungry. Please consider lending us your continued support during this holiday season by filling out the remittance envelope or scanning the QR code. Thank you for all you've done, and for your continued partnership!

## What's New?

HILCORP BROWN BEARS NIGHT    DEC. 1 AT 7:30 PM

CHRISTMAS MEAL    DEC. 22 FROM 11:30 AM - 1 PM





# Upcoming Events



**Hilcorp**



## HILCORP SPONSORED BROWN BEARS NIGHT FOOD DRIVE

Join us in rooting for the Brown Bears and feeding the hungry at the Hilcorp sponsored Brown Bears vs Anchorage Wolverines game! Free admission with a donation of non-perishable food items for KPFB. Recommended food donation of 2 items per attendee.

**SOLDOTNA SPORTS COMPLEX      DECEMBER 1  
7:30 PM**

## Christmas MEAL

Join us for our annual Christmas meal in our Fireweed Diner! It is free and open to everyone--you do not need to qualify for services to join in the festivities. It'll be a time of fun, food, and fellowship!

**FIREWEED DINER  
33955 COMMUNITY      DECEMBER 22  
COLLEGE DRIVE,      11:30 AM - 1 PM  
SOLDOTNA, AK**

## Holiday Food Drive List

Want to collect food for the holidays for a food drive? Consider collecting these most needed items:

- INSTANT POTATOES
- CANNED GREEN BEANS
- CREAM OF MUSHROOM SOUP OR OTHER SOUPS
- GRAVY
- CANNED CRANBERRY SAUCE



## Volunteers of the Year



**M**arathon's employees have been volunteering faithfully this year putting together our remote distribution food bags. They also put together and staffed the Catching for a Cause event that benefitted the food bank. Together, they've put in hundreds of hours towards our goal of feeding all those suffering from hunger on the Peninsula. Their dedication and service is inspiring, and we have been so grateful to partner with them. They are critical pieces of the puzzle to feeding the hungry! Thank you for your dedication to serving our community, Marathon!



# Thank you for making Adopt A Turkey a Success!



When we realized the amount of turkeys being requested this year and the cost increase, the challenge to provide a turkey to each family in need felt insurmountable. As they do every year, Marathon donated funds for 400 turkeys, but we needed additional help in covering the other 800.



Jackie Smith

HEAVERLEY HOMES - JACK WHITE REAL ESTATE

G & S Construction Inc.  
Since 1976



Reaching out to Hilcorp for additional support, we were overwhelmed with the care for our community! Hilcorp helped us cross the finish line of our goal of 1,200 turkeys, and even skyrocketed past it with their donations of over 800 turkeys.

FRCH Rentals, G & S Construction, Jackie Smith, Davis Block & Concrete, Laura Best, and Heaverly Homes contributed significantly to the efforts as well.

We are so grateful to Hilcorp, Marathon, Heaverly Homes - Jack White Real Estate, FRCH Rentals, G & S Construction, Jackie Smith, Davis Block & Concrete, Laura Best, and everyone else who donated for all their support and for helping us exceed our turkey goal!

LAURA BEST

FRCH RENTALS



The difference you've made is immeasurable, and we cannot begin to thank you enough!

Huge thank you to Walmart for everything they've done for us this year!

# Thank you!



They not only donate food to KPFB daily, but they have also sent over pallets upon pallets of donations. In fact, one weekend they donated 47,000 pounds of food!



In total, they've donated more than any other store on the peninsula. Their donations have gone a long way toward ensuring no one goes hungry!



thank you



MARC Air has been partnering with KPFB for years to supply food to the village of Tyonek. Each month, they donate their time, planes, and pilots to fly senior boxes and other commodities. They also do special flights during the holidays to fly turkeys and other holiday foods. With MARC, turkeys DO fly! Thank you, MARC!



In November, SeaShare and Carlile partnered together to donate 11 pallets of seafood all the way from Kodiak! Thank you so much!





# Truly Grateful for you.



Thank you to all our amazing volunteers, staff, board members, donors, and sponsors!

THE KENAI PENINSULA BOROUGH SCHOOL DISTRICT STAFF ASSEMBLED HUNDREDS OF HALLOWEEN GOODIE BAGS FOR KPFB'S EVENTS



274 POUNDS OF FOOD WAS DONATED FROM KENAI AVIATION'S PUMPKIN DROP EVENT



BRIAN SPERRY DONATED 27 TURKEYS TO KPFB

THE TSALTESHI TRAILS GROUP PUT TOGETHER THE TSALTESHI SPOOKTACULAR AND KPFB JOINED IN THE FUN



CAPSTONE CLINIC IN KENAI RAISED 375 POUNDS OF FOOD FROM THEIR TRICK OR TREAT AT HOGWARTS EVENT

STERLING COMMUNITY CENTER HELD A MOVIE NIGHT AND RAISED 60 POUNDS OF FOOD



THE KENAI PENINSULA ASSOCIATION OF REALTORS DONATED 1,770 POUNDS OF FOOD FROM THEIR ANNUAL GIVING THANKS FOOD DRIVE



A GROUP OF 18 STUDENTS, TEACHERS, AND PARENTS WITH THE CONNECTIONS HOMESCHOOL PROGRAM PUT TOGETHER HUNDREDS OF GOODIE BAGS AND PRIZES FOR KPFB'S EVENTS



NUVISION CREDIT UNION DONATED 200 POUNDS OF FOOD FROM THEIR FOOD DRIVE AND \$500



A LOCAL COUPLE GAVE 50 TURKEYS TO KPFB



OCS HELD A FOOD DRIVE AND DONATED 35 POUNDS OF FOOD TO KPFB



CENTRAL PENINSULA HOSPITAL DONATED 113 TURKEYS AND 36 HAMS FOR A TOTAL OF 2,001 POUNDS OF FOOD TO KPFB

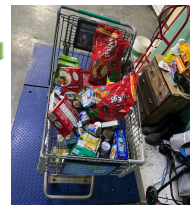


THE KENAI CHAMBER OF COMMERCE DONATED 383 POUNDS OF FOOD TO KPFB FROM THEIR HAUNTED CHAMBER EVENT

Pick. Click. Give.



THANK YOU TO EVERYONE WHO GAVE THROUGH PICK. CLICK. GIVE! THE DONATIONS WILL BE USED TO SUPPORT THOSE STRUGGLING WITH HUNGER ON THE PENINSULA.



## IT'S SCARY TO BE HUNGRY

Thank you to everyone who made the event a success! Shout outs to Central Peninsula Hospital for sponsoring, PenDog for providing dog treats and toys, KSRM radio for covering the event, KDLL and the Peninsula Clarion for promoting the event, and our wonderful volunteers!

Thank you for helping us serve over 340 people served in 2 hours!





# DID YOU KNOW

## We're Serving The Entire Kenai Peninsula



### WHAT YOU DO MAKES A DIFFERENCE

In the words of one of our neighbors:

*I truly feel blessed to have the food bank it has saved my family literally from starvation, supplied many smiles and comfort on birthdays as well. Thanks for sharing and caring. May God bless you and yours now and always. ~ Your Neighbor*



Anchor Point



Tyonek



Tyonek



### Our Reach - Over 40 Communities - 25,000 sq. mi.

From Tyonek to Nanwalek to Seward, we're feeding people through our network of over 45 partner agencies, including food pantries, senior centers, community centers, shelters, treatment centers, schools, and village outreach. We use planes, ships, barges, cars, sleds, and trucks to get food to the hungry every month!

### Feeding the Peninsula One Person at a Time

We work tirelessly with our partners to ensure all our neighbors have access to nutritious food every day of the year. Meals are prepared for the Nikiski Shelter of Hope, Anchor Point Food Pantry, and at KPFB. Your donations truly support our efforts to ensure that all our neighbors are fed. Every day, we are living out our mission: "We Feed People, Because Nobody Deserves to be Hungry."

### Holiday Outreach

Starting in November, we fly, boat, and drive turkeys out to our partners to ensure that everyone has a delicious holiday meal.



# Ways to

## DONATE



### Online:

kpfoodbank.org/donate-now

### Over the Phone:

907-416-7619

### Mail or In-Person:

33955 Community College Dr.  
Soldotna, AK 99669

### Gifts of Assets:

You can gift real estate, closely-held business interests or stock, and planned giving vehicles by calling 907-416-7619.

### Gifts of Mutual Funds or Special Securities :

You can gift tendered stock or restricted stock by calling 907-416-7619.

### Donate with your phone

1. Open your camera and hover over the QR code
2. It will give you the option to open the QR link in your phone's web browser
3. Click on that option, and follow the steps in the online form to donate



### Mandatory Disbursement Gifts:

- Beginning in the year you turn 72, you can donate to KPFB from your IRA to satisfy all or part of your required minimum distribution (RMD).
- You pay no income taxes on the gift. The transfer generates neither taxable income nor a tax deduction, so you benefit even if you do not itemize your deductions.
- Since the gift doesn't count as income, it can reduce your annual income level. This may help lower your Medicare premiums and decrease the amount of Social Security that is subject to tax.
- Contact your retirement provider to learn more!

### Donor Directed Gifts:

Keep your donation in a tax free account, and direct the gift to KPFB. You will not have to pay income taxes on the gift.



33955 Community College Drive  
Soldotna, AK 99669  
907-416-7619; Fax: 907-416-7623

**THIS INSTITUTION IS AN  
EQUAL OPPORTUNITY  
PROVIDER.**

**Visit our website  
and social  
media pages!**

Twitter:

@KPFoodBank

Instagram:

@kenaipenisulafoodbank

Facebook:

facebook.com/kpfoodbank

Website:

kpfoodbank.org



### Have you considered?

Email communication helps to reduce postage costs, and can be fiscally and environmentally responsible. We try to communicate with donors through email as much as possible. If you aren't receiving emails from us, but would like to, please contact [lmurray@kpfoodbank.org](mailto:lmurray@kpfoodbank.org)